



**KIA MOTORS**  
The Power to Surprise™

**X**  
10 YEARS  
IN CANADA



THE ALL-NEW 2010

**FORTE**



THE ALL-NEW 2010 FORTE  
TIRD  
ORLDRIVE  
ORTE  
FE.



Forte EX shown in Sterling



A NEW DIRECTION

STYLE  
MOTION

The 2010 Kia Forte is a fresh, new take on the compact sedan.

Forte captures your eye with its dynamic road presence. The sweep of its bold lines continues inside, creating a modern cabin where form and function blend seamlessly.

So much excitement. So many conveniences. All in a car so affordable. That's always been Kia's forte.

Forte SX shown in Electric Blue

THIS IS THE  
WAY DRIVING  
SHOULD BE.

LET THE PERFORMANCE BEGIN

Whether you spend your time on the open road or in the stop-and-go of city driving, you have a friend in Forte.

A meticulously engineered chassis and four-wheel independent suspension work in harmony, blending dynamic handling and ride comfort. Under the hood, Forte LX and EX models provide a responsive 156-horsepower from a 2.0-litre engine with continuously variable valve timing (CVVT) for outstanding fuel economy, while the 2.4-litre dual CVVT engine in the Forte SX puts an exuberant 173 horsepower at your command.



Forte EX shown in Radiant Red

# ALL YOU NEED. AND MORE.

INNER HARMONY

With the all-new Forte, Kia raises the bar for comfort, roominess and convenience in a compact sedan. Power windows, door locks and heated mirrors are standard on every model. And if you crave more, Forte is available with some surprising extras – like heated front seats, leather trim, automatic climate control and alloy sport pedals.



**HEATED FRONT SEATS** take the chill out of winter driving. They're standard on the EX and SX.



**POWER TILT AND SLIDING SUNROOF** offers the added exhilaration of open-air driving. What better way to enjoy a beautiful day? It's standard on SX and optional on EX models.



**AUTOMATIC CLIMATE CONTROL** brings year-round, set-and-forget comfort and it's standard equipment on the SX. Manual air conditioning is standard on EX and available on LX models.



**TILT AND TELESCOPING STEERING WHEEL** lets you position the wheel precisely where you want it. This control-enhancing comfort feature is standard on EX and SX models.



**POWER WINDOWS** are standard on every Forte. They include a quick and convenient one-touch-down function for the driver's window to help speed you through any drive-thru.



**REAR CENTRE ARMREST** includes handy cupholders for your passengers. The standard 60:40 split seatbacks also fold down to accommodate oversized cargo when you need the added space.

Get behind the wheel of the all-new Forte and you'll experience an invigorating sense of command. It's in the grip of the steering wheel, the purposeful action of the switches and the way every gauge is perfectly positioned. Just turn the key and take control.

WELCOME TO  
COMMAND CENTRAL

TAKE FULL  
CONTROL



- 1** LED-BACKLIT INSTRUMENT CLUSTER on LX and EX models provides precise, at-a-glance driving information. The SX features a standard Supervision cluster with sophisticated white-blue lighting.
- 2** 5-SPEED MANUAL TRANSMISSION is standard on the LX and EX. It delivers smooth, lightning-fast shifts and is one of four available Forte transmissions.
- 3** AUXILIARY AUDIO INPUT and a standard USB port let you link your iPod® or other digital music player directly to Forte's audio system.



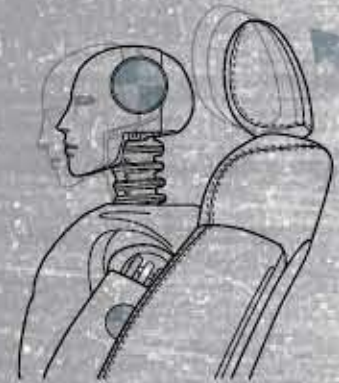
SIRIUS® SATELLITE RADIO provides the soundtrack to a great drive with commercial-free music and 120 full-time channels. Enjoy it with a three-month trial subscription on Forte SX models.



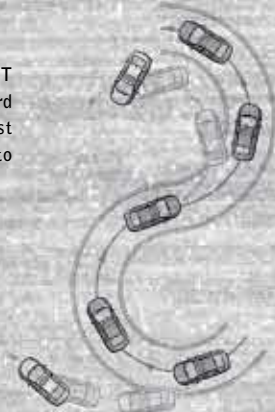
**INTEGRATED TURN SIGNALS** in the side mirrors alert adjacent drivers to your turning or lane-change intentions to help you move more safely through traffic on busy highways or crowded downtown streets. They're standard on EX and SX models.

**ADVANCED HANDS-FREE BLUETOOTH® CAPABILITY\*** is standard on every Forte. Its voice activation lets you make phone calls without taking your hands off the wheel.

\*Compatible Bluetooth®-enabled wireless phone required.



< **ANTI-WHIPLASH FRONT HEADRESTS** move forward and upward in the first milliseconds of a crash to help reduce neck injuries.



< **ELECTRONIC STABILITY CONTROL** automatically adjusts brake pressure at the appropriate wheel or wheels and regulates engine torque to correct your path. It's standard on all EX and SX models.

**FOUR-WHEEL ANTI-LOCK DISC BRAKES** respond to slippery road conditions or sudden stops with the power and confidence you need to maintain control in challenging driving situations. And they're standard on every Forte.

Safety comes naturally to the Kia Forte. There's the standard protection of six airbags, complemented by the sure-footed stopping power of four-wheel anti-lock disc brakes and a rigid body structure that helps channel crash energy away from you and your passengers.

**SAFETY INSIDE AND OUT.**

**SAFE HAVEN**



## FEATURES

Exterior	LX	EX	SX
15" steel wheels with full covers	S	–	–
16" 5-spoke alloy wheels	–	S	–
17" 10-spoke alloy wheels	–	–	S
P195/65 R15 tires	S	–	–
P205/55 R16 tires	–	S	–
P215/45 R17 tires	–	–	S
Sport-tuned suspension	–	–	S
Fog lamps	–	–	S
Tinted window glass	S	S	S
Power tilt and sliding sunroof	–	O	S
Dual power, heated, body-coloured side mirrors	S	S	S
Outside mirror with integrated turn signal	–	S	S
Body-coloured outside door handles and rear garnish	S	–	–
Chrome-coated outside door handles and rear garnish	–	S	S
Front & rear mud guards	S	S	S

S = Standard O = Optional – = Not Available

<sup>1</sup> Available in the 10 provinces and 3 territories of Canada and 48 contiguous United States. Monthly subscription sold separately after three trial months.

\* Automatic transmission only.



Delivering 120 channels of some of the best programming available, SIRIUS is The Best Radio on Radio. Home of 100% commercial free music, news, talk, entertainment, traffic, weather and data, SIRIUS also broadcasts live play-by-play as the Official Satellite Radio Partner of the NFL, NASCAR, NBA and NHL. To find out more about SIRIUS Satellite Radio, speak to your Kia dealer or visit [www.sirius.com](http://www.sirius.com)

Comfort & Convenience	LX	EX	SX
Air conditioning	O	S	S
Automatic climate control	–	–	S
Cabin air filter	S	S	S
Supervision instrument cluster	–	–	S
Power door locks with 2-turn entry system	S	S	S
Remote keyless entry system with panic alarm	O	S	S
AM/FM/CD/MP3 stereo with 4 speakers	S	S	S
Six speakers including two front mounted tweeters	–	S	S
Steering wheel mounted audio controls	S	S	S
Sirius® satellite radio (includes three trial months) <sup>1</sup>	–	–	S
Audio input jacks - AUX & USB	S	S	S
Voice activated Bluetooth® hands-free capability	S	S	S
Steering wheel mounted cruise control	–	S	S
Power windows with one-touch driver's express down	S	S	S
Front console dual cupholder	S	S	S
Dual front console power outlets	S	S	S
Centre console with storage compartment	S	S	S
Front windshield wiper de-icer	–	S	S
Two speed variable intermittent front wipers	S	S	S
Rear window defroster	S	S	S
Rear package tray	S	S	S
Map lamp with sunglass holder	S	S	S
Trip computer	–	–	S
Illuminated ignition key hole	–	S	S
Eco-Minder indicator*	S	S	S

Seating & Trim	LX	EX	SX
Cloth seats	S	S	–
Leather seats	–	–	S
Heated front seats	–	S	S
Driver's seat height adjuster	S	S	S
Soft polyurethane steering wheel & gear shift knob	S	S	–
Leather-wrapped steering wheel & gear shift knob	–	–	S
Manual tilt steering column	S	S	S
Manual tilt & telescoping steering column	–	S	S
Metallic colour interior accents	–	–	S
Alloy sport pedals	–	–	S
60:40 split folding rear seat	S	S	S
Rear seat centre armrest with cupholders	S	S	S

Safety	LX	EX	SX
Dual front impact airbags	S	S	S
Dual front seat-mounted side impact airbags	S	S	S
Dual full-length side impact curtain airbags	S	S	S
4-wheel disc brakes with anti-lock braking system (ABS)	S	S	S
Anti-whiplash active front headrests	S	S	S
Electronic stability control (ESC)	–	S	S
Traction control system (TCS)	–	S	S
Rear child safety door locks	S	S	S
Rear seat lower anchors and tethers for children (LATCH)	S	S	S
Rear seat height adjustable headrests	S	S	S
Impact-sensing auto door unlock	S	S	S

## INTERIOR COLOURS



Black Cloth



Black Leather

## SPECIFICATIONS

Engine	LX & EX	SX
Type	2.0 L Inline 4 cylinder, aluminum block and head	2.4 L Inline 4 cylinder, aluminum block and head
Valve train	DOHC, 16 valve, Continuously Variable Valve Timing (CVVT)	DOHC, 16 valve, Dual Continuously Variable Valve Timing (CVVT)
Horsepower	156 hp @ 6,200 rpm	173 hp @ 6,000 rpm
Torque	144 lb.-ft. @ 4,300 rpm	168 lb.-ft. @ 4,000 rpm
Compression ratio	10.5:1	10.5:1
Intake	Electronic Throttle Control (ETC)	Variable Intake System (VIS), Electronic Throttle Control (ETC)
Emission rating	Ultra Low Emission Vehicle (ULEV)	Ultra Low Emission Vehicle (ULEV)
Transmission	5-speed manual transmission	6-speed manual transmission
	Available 4-speed Steptronic automatic transmission, electronically controlled	Available 5-speed Steptronic automatic transmission, electronically controlled

Dimensions, mm (in.)	LX & EX	SX
Wheelbase	2,650 (104.3)	2,650 (104.3)
Track (front/rear)	LX: 1,557 / 1,564 (61.3 / 61.6) EX: 1,543 / 1,550 (60.8 / 61.0)	1,539 / 1,546 (60.6 / 60.9)
Length	4,530 (178.4)	4,530 (178.4)
Width	1,775 (69.9)	1,775 (69.9)
Height	1,460 (57.5)	1,460 (57.5)
Head room (front/rear)	1,015 / 955 (40.0 / 37.6)	1,015 / 955 (40.0 / 37.6)
Shoulder room (front/rear)	1,415 / 1,390 (55.7 / 54.7)	1,415 / 1,390 (55.7 / 54.7)
Leg room (front/rear)	1,100 / 890 (43.3 / 35.0)	1,100 / 890 (43.3 / 35.0)
Hip room (front/rear)	1,345 / 1,355 (53.0 / 53.4)	1,345 / 1,355 (53.0 / 53.4)

## EXTERIOR COLOURS



Bronze (M) BC/BL



Electric Blue (M) BC/BL



Black Orchid BC/BL



Sterling (M) BC/BL



Pure White BC/BL



Smoky Grey (M) BC/BL



Radiant Red (M) BC/BL



Titanium (M) BC/BL

BC = Black cloth, BL = Black leather, M = Metallic paint  
The exterior and interior colours in this brochure are as close to the actual vehicle production colours as the printing process allows.

Body & Chassis	
Layout	Front engine, front wheel drive
Body type	Steel unibody
Front suspension	Independent, MacPherson strut, coil springs with stabilizer bar
Rear suspension	Coupled torsion beam with coil springs
Steering	Rack-and-pinion, power assist

Brakes	LX & EX	SX
Type	Hydraulic, power-assisted vacuum	Hydraulic, power-assisted vacuum
ABS	4-wheel, four sensor, four channel	4-wheel, four sensor, four channel
Front, mm (in.)	280 (11.0) vented discs	300 (11.8) vented discs
Rear, mm (in.)	262 (10.3) solid discs	262 (10.3) solid discs

Curb Weight, kg (lb.)	LX & EX	SX
5-speed manual transmission	1,228-1,289 (2,707-2,842)	–
4-speed automatic transmission	1,243-1,304 (2,740-2,875)	–
6-speed manual transmission	–	1,294-1,343 (2,853-2,961)
5-speed automatic transmission	–	1,301-1,350 (2,868-2,976)

Capacities, L (cu. ft.)	
Passenger volume	2,740 (96.7) without sunroof 2,711 (95.7) with sunroof
Cargo capacity	415 (14.7)
Fuel tank capacity, L (imp. gal.)	52 (11.4)

Fuel Economy (Highway/City), L/100km (mpg)	LX & EX	SX
5-speed manual transmission	5.8 / 8.3 (49/34)	–
4-speed automatic transmission	5.8 / 8.1 (49/35)	–
6-speed manual transmission	–	6.2 / 9.2 (46/31)
5-speed automatic transmission	–	6.3 / 9.0 (45/31)

## WHEELS



15" steel wheels with full covers



16" 5-spoke alloy wheels



17" 10-spoke alloy wheels

A PERFECT BALANCE



**5 Year**  
Warranty

We've got you covered.

- 5-year/100,000 km Worry-free comprehensive warranty covering virtually the entire vehicle\*
- 5-year/100,000 km Powertrain warranty covering the engine, transmission, axles, differentials and driveshafts\*
- 5-year/100,000 km Roadside assistance covers you in case of mechanical breakdown anywhere in North America\*
- 5-year/unlimited km Anti-perforation warranty on body sheet metal defects in material/workmanship\*

For more information visit [kia.ca](http://kia.ca) or call 1-877-542-2886

[www.kia.ca](http://www.kia.ca)

**KIA**  
KIA MOTORS  
The Power to Surprise™

**X**  
10 YEARS  
IN CANADA



\* Some restrictions apply. For more information on our 5-5-5 Total Care Ownership Coverage, call us at 1-877-542-2886. All information contained herein was accurate and correct at the time of printing. Kia Canada Inc. reserves the right to make changes at any time without notice, and without any obligations as to colours, materials, specifications, features, accessories, packages, models and any applicable programs. Some vehicles shown may include optional equipment or may not be exactly as shown. Kia Canada Inc., by the publication and dissemination of this material, does not create any warranties, either expressed or implied, to any Kia products. See your Kia dealer or website for further details. SIRIUS logo and related marks are trademarks of SIRIUS Satellite Radio Inc. The Bluetooth word mark and logo are registered trademarks and are owned by Bluetooth SIG, Inc. Reproduction of the contents of this material without the expressed written approval of Kia Canada Inc. is prohibited. © Copyright 2009 Kia Canada Inc. Printed in Canada, April 2009.

Part # 99999 031ME10

## YOUR FUTURE

Kia is committed to environmental sustainability and protecting the future for both you and your family. Through extensive research and development, we are actively researching alternative fuels and expanding the use of eco-friendly technology with the development of more efficient engines, exhaust systems and transmissions.

Kia has played a leading role in developing alternative-fuel vehicles to help significantly reduce fuel emissions. Our Fuel Cell Electric Vehicle (FCEV) program is developing and testing hydrogen fuel cell powered Kia Borregos as well as using more materials made from recyclable aluminum and magnesium - that are 30% to 40% lighter than steel to boost fuel economy. The Kia Rio hybrid, now in testing, is expected to reduce air pollutants by 30% and increase fuel efficiency by 50%.

We also continue to improve our recycling efforts with the establishment of an automotive recycling centre with the goal of making vehicles that are 95% recyclable.

## OUR FUTURE

Kia Motors recently became the fifth-largest automaker in the world and Kia Motors continues to be one of the fastest-growing with annual sales in excess of 1.4 million vehicles. We also understand that our continued success will be dependent upon our commitment to design.

Reflecting this, Kia Motors' state-of-the-art 100,700 sq.-ft. North American Design Centre features a \$45 million studio which engineers, models and creates new vehicles. But our commitment to you goes beyond design. In 2009, we will be opening our first automotive plant in North America.

At Kia, when we talk about changes in the future, we're talking about changes for the better.