

2010 Jeep[®]
Compass





JEEP COMPASS LIMITED SHOWN IN BRIGHT SILVER METALLIC

Welcome to all-around confidence.

Its ability to stand up to almost any kind of weather is what makes it stand apart. Its ability to take it all in stride is what encourages you to head out. This is the 2010 Jeep® Compass. From standard safety systems to an available four-wheel-drive system, every element of Compass has been fortified with the kind of know-how that has set Jeep vehicles apart for over 65 years. Its 2.4L dual Variable Valve Timing (VVT) World Engine sets itself apart with 172 horsepower and outstanding fuel efficiency. The available Continuously Variable Automatic Transmission uses a system of pulleys instead of gears to give you a smoother ride and better performance. At every corner, the ingenuity and style inherent in Compass make every drive more fun.

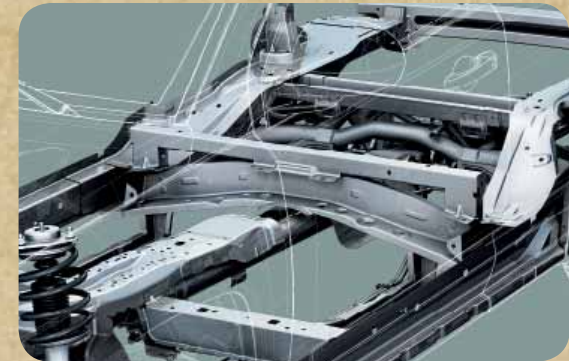
This is a new standard of safety and security. From standard side-curtain air bags⁽¹⁾ to standard Electronic Stability Program (ESP™)⁽²⁾ with Electronic Roll Mitigation that assists a driver in maintaining an intended course, Jeep Compass is loaded with brilliant safety and security advancements as standard equipment. Electronic Roll Mitigation uses braking to help ensure that all four wheels remain in contact with the road. Brake Assist applies maximum hydraulic pressure when a panic braking situation is detected. Standard traction control helps manage power, providing maximum traction and minimum slippage. The Anti-lock Brake System (ABS) features calibration on 4x4 models to compensate for unpaved surfaces. This level of standard safety and security features is anything but standard.



All Compass models offer the protection of standard safety features such as advanced front and side-curtain air bags,⁽¹⁾ and new Active Head Restraints. Also standard is Tire Pressure Monitoring (TPM), which provides vital information to help you avoid accidents.



Equip Compass with the available Freedom-Drive I® four-wheel-drive system and it will be immediately evident why this system carries such an empowering name. With rear-axle electronic activation, it delivers brilliant balance and exceptional poise in nearly any weather condition. The ultra-high-strength steel cross-vehicle beam provides a confidence all its own, fortifying the backbone of every Compass.



⁽¹⁾Always use seat belts. Children 12 and under should always be in a back seat correctly using an infant or child restraint system, or the seat belt properly positioned, dependent on the child's age and weight.

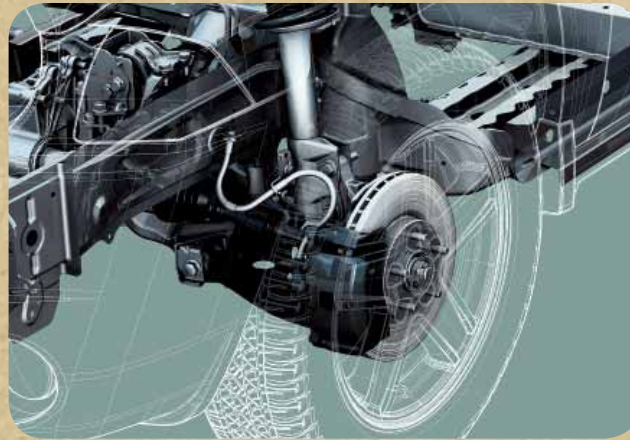
⁽²⁾No system, no matter how sophisticated, can repeal the laws of physics or overcome careless driving actions. Performance is limited by available traction, which snow, ice and other conditions can affect. When the ESP warning lamp in the instrument cluster flashes, the driver needs to use less throttle and adapt speed and driving behaviour to prevailing road conditions. Always drive carefully, consistent with conditions. Please always wear your seat belt.

Ready, willing and capable: Jeep® 4x4

Jeep Compass 4x4 stands with a sure-footed stance for good reason. Its Freedom-Drive I® active full-time four-wheel-drive (4x4) system features an Electronically Controlled Coupling (ECC), which constantly monitors wheel slippage and transfers torque to the axle that can use it most. During high-traction driving, as on the highway, the system transfers virtually no torque to the rear axle, for optimum fuel economy. A four-wheel independent suspension, with MacPherson struts up front and a multilink system in the rear, also works to help ensure constant contact with the road. After all, Compass is a Jeep vehicle and, like the entire family, it takes the ability to adapt to most conditions as its right.



Engaging the 4WD LOCK control, included with the Compass four-wheel-drive system, effectively locks the front and rear axles at a 50/50 torque split for optimum traction at low speeds.



The standard Compass front-wheel-drive system is a first for any Jeep vehicle, combining outstanding traction with the fun-to-drive agility of a MacPherson strut/multilink suspension.





JEEP COMPASS LIMITED SHOWN IN BRIGHT SILVER METALLIC WITH OPTIONAL POWER SUNROOF



JEEP COMPASS LIMITED IN DEEP WATER BLUE PEARL

Pass traffic, and the pump.

The most impressive needle on the Jeep® Compass is the one on the fuel gauge. Why? Because even as its 2.4L DOHC VVT World Engine delivers 172 horsepower, it can achieve an EnerGuide Highway fuel consumption rating of up to 7.1L/100 km (40 mpg).⁽¹⁾ Whether you opt for the 2.4L or the 2.0L engine – available this year with 5-speed manual transmission – these transversely mounted technological masterpieces employ Dual Overhead Cams (DOHC) and Variable Valve Timing (VVT) on both intake and exhaust camshafts. The electronically controlled timing is continuously adjusted to provide either maximum power or optimal fuel efficiency – depending on the demands of that instant. Simply put: simply smart.



This potent 2.4L DOHC VVT power plant puts out nearly six cylinders worth of horsepower from its aluminum four-cylinder block.

EnerGuide ratings⁽¹⁾ with FWD and 5-speed manual transmission:
8.9L/100 km (32 mpg) City; 7.1L/100 km (40 mpg) Highway.

The 2.0L four-cylinder engine produces 158 hp and is available paired with either the 5-speed manual transmission or the Continuously Variable Automatic Transmission (CVT). It is only available on Sport and North Edition front-wheel-drive (FWD) models and it delivers impressive EnerGuide ratings:⁽¹⁾ 8.9L/100 km (32 mpg) City; 6.9L/100 km (41 mpg) Highway with 5-speed manual; 9.0L/100 km (31 mpg) City; 7.3L/100 km (39 mpg) Highway with CVT automatic.



Go gearless with CVT.

A CVT (Continuously Variable Transmission) is an innovative automatic transmission that uses a system of pulleys instead of gears to “shift” up or down. The benefit? It provides a smoother driving experience, while boosting performance and raising fuel efficiency. Available with the 2.0L engine on 4x2 Compass Sport and North Edition and with the 2.4L engine on all Compass models.

⁽¹⁾2010 EnerGuide ratings. Transport Canada test methods used. Actual fuel consumption may vary.

All dressed up and everywhere to go.

The luxuriously appointed Jeep® Compass Limited model proves that you can make an intelligent choice without sacrificing the refinements of a larger, more expensive ride. On the outside, Limited stands apart with swooping contours accented by silver front and rear fascia overlays, bright bodyside mouldings, deep-tinted glass and gleaming 18-inch aluminum wheels. Limited's leather-wrapped steering wheel keeps you comfortably in command of the road and the soundtrack with integrated audio controls and the convenience of an available map-display GPS navigation premium radio, all while keeping you firmly supported in its leather-faced, heated front bucket seats with driver's side six-way power and manual lumbar adjustment. You'll find all the standard equipment you'd expect, like: standard air conditioning, speed control, power locks, windows and heated mirrors, Tire Pressure Monitoring, Electronic Vehicle Information Centre, remote keyless/illuminated entry, 115-volt electric outlet, removable/rechargeable LED cargo lamp/flashlight, auto-dimming rear-view mirror, universal garage door opener transceiver and more. And like your favourite restaurant, you have the choice to dress your Compass Limited to taste with personal touches like an available power sunroof, automatic temperature control, remote start and Uconnect Phone hands-free calling with voice command.



FROM THE SIMPLICITY OF INTUITIVELY PLACED CONTROLS TO THE ADVANCED INFOTAINMENT TECHNOLOGY OF AN AVAILABLE UCONNECT NAVIGATION MEDIA CENTRE WITH 730N DVD/CD/MP3 RADIO, 30GB HDD AND GPS NAVIGATION, LIMITED'S REFINED INTERIOR HAS IT ALL.

jeep.ca/compass





JEEP® COMPASS LIMITED SHOWN IN NATURAL GREEN PEARL



Compass North Edition makes it easy.

Specially created for Canada, the Compass North Edition brings together some of the most popular features in a fun, ready for anything package. We're talking power windows/mirrors/door locks, new heated mirrors, deep-tint sunscreen glass, remote keyless/illuminated entry and reclining 60/40-split folding rear seatbacks. There's also a 115V power outlet, front reading lamps, a tire pressure warning light, revolutionary Stain Repel⁽¹⁾ stain/odour/static resistant seat fabric and a fold-flat front passenger seat for carrying those extra long cargo items. For 2010, Compass North Edition even turns up the exterior style with new body colour liftgate appliqué and door handles. To personalize your ride even more, you can dial up the comfort with available heated front seats, power up the adventure with the Freedom-Drive[®] four-wheel-drive system, crank up the volume with the Media Centre 230 AM/FM/CD six-disc radio, SIRIUS[®] Satellite Radio and a premium nine-speaker Boston Acoustics[®] sound system with flip-down liftgate speakers, or hook up your favourite toys with a Trailer Tow Prep Group that lets you tow up to 907 kg (2000 lb.).⁽²⁾

Whether it's the driver and four passengers, each of whom can benefit from the ability to recline, or three people making the most of the 60/40-split folding rear seat, or a lone driver surrounded by nothing but cargo and the available flat-fold storage space that accommodates it, Compass North Edition can carry almost any kind of combination of cargo its driver (or the driver's favour-asking companions) is capable of concocting.

Properly secure all cargo.

jeep.ca/compass



JEEP[®] COMPASS NORTH EDITION SHOWN IN DEEP WATER BLUE PEARL

⁽¹⁾Not compatible with aftermarket fabric protecting coatings. ⁽²⁾Trailer Tow Prep Group not available with 2.0L engine. Other restrictions may apply – See Owner's Manual.

Life's a sport, play to win.

Armed with technology and uniquely urban capabilities, Jeep® Compass Sport was drafted to deliver. Its 2.4L dual VVT World Engine puts out 172 horsepower with exceptional fuel efficiency. Also available is a 158-horsepower 2.0L engine designed to deliver even more remarkable fuel efficiency. A standard Electronic Stability Program (ESP™)⁽¹⁾ with Electronic Roll Mitigation and Brake Assist, four-wheel Anti-lock Brake System (ABS) and traction control provide poise on byways and expressways alike. Not surprisingly, standard safety and security features, such as side-curtain air bags,⁽²⁾ front seat Active Head Restraints and a Tire Pressure Monitoring warning lamp, abound in Compass Sport. From comfortable seating for five with ample cargo storage behind the second row to the 60/40-split folding rear seat for maximum floor space, Compass can negate excuses as far as cargo-carrying capabilities are concerned. A removable cargo load floor provides a 115-kg (250-lb.) load capacity. The Sport interior is not solely utility-minded, as creature comforts like standard illuminated front cup holders, standard auxiliary input jack and MP3-capable stereo system, removable/rechargeable flashlight and passenger assist handles, will benefit any interior configuration.

⁽¹⁾No system, no matter how sophisticated, can repeal the laws of physics or overcome careless driving actions. Performance is limited by available traction, which snow, ice and other conditions can affect. When the ESP warning lamp in the instrument cluster flashes, the driver needs to use less throttle and adapt speed and driving behaviour to prevailing road conditions. Always drive carefully, consistent with conditions. Please always wear your seat belt. ⁽²⁾Always use seat belts. Children 12 and under should always be in a back seat correctly using an infant or child restraint system, or the seat belt properly positioned, dependent on the child's age and weight.

JEEP COMPASS SPORT SHOWN IN INFERNO RED CRYSTAL PEARL, EQUIPPED WITH ROOF-MOUNT BIKE CARRIER AND REMOVABLE ROOF RACK, AUTHENTIC JEEP ACCESSORIES BY MOPAR.



Sound engineering.

Jeep® Compass is making some noise with innovative sound systems that break the barrier of mere door-mounted speakers. Your available choices include a Media Centre 230 AM/FM radio with six-disc CD changer, SIRIUS® Satellite Radio⁽¹⁾ (with a one-year free subscription), and a Sun/Sound Group that combines the fresh air fun of a power sunroof with the premium sound of six Boston Acoustics® speakers, a subwoofer, a 368-watt amplifier and two liftgate speakers that flip down. There's also a leather-wrapped steering wheel with audio controls.⁽¹⁾ Add it all up and you've got an audible feast that will satisfy any taste for tunes.



Twin liftgate speakers, included in the optional Sun/Sound Group, on North Edition and Limited, will liven up the sound experience at tailgate parties and picnics.



The standard radio features an auxiliary audio input jack integrated into the faceplate – for MP3 player connectivity straight out of the box.



With a sliding sunshade and express open/close feature, the available power sunroof can take you from snug to al fresco in just seconds.



JEEP COMPASS LIMITED DASH SHOWN WITH MEDIA CENTRE 730N NAVIGATION RADIO AND CVT WITH AUTO/STICK™

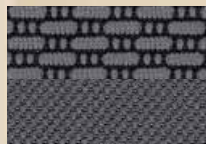
jeep.ca/compass

⁽¹⁾Standard on Limited.

Colour and Trim



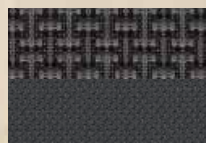
Cloth
– Light Pebble Beige
Standard on Sport



Cloth
– Dark Slate Grey
Standard on Sport



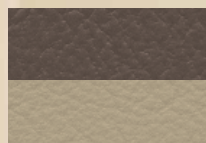
Stain Repel⁽¹⁾ seat fabric
– Light Pebble Beige
Standard on North Edition



Stain Repel⁽¹⁾ seat fabric
– Dark Slate Grey
Standard on North Edition



Leather-faced
– Dark Slate Grey
Standard on Limited



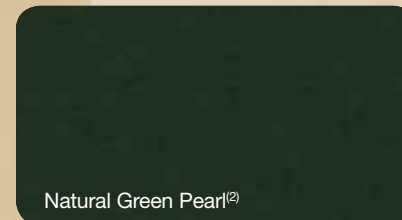
Leather-faced
– Light Pebble Beige
Standard on Limited



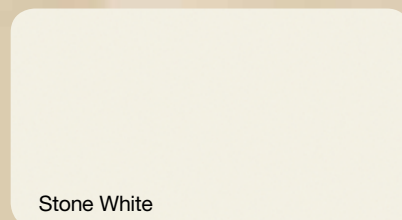
Brilliant Black Crystal Pearl



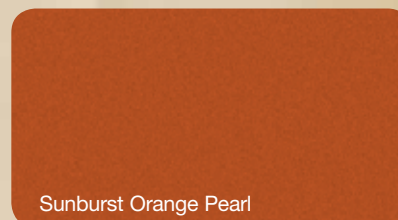
Light Sandstone Metallic



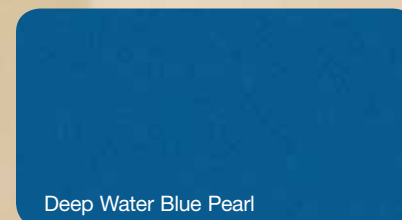
Natural Green Pearl⁽²⁾



Stone White



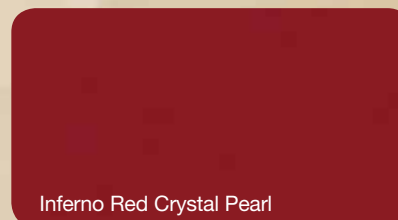
Sunburst Orange Pearl



Deep Water Blue Pearl



Bright Silver Metallic



Inferno Red Crystal Pearl

⁽²⁾New for 2010.

NOTE: Due to occasional printing irregularities, the colours shown may vary slightly from actual hues.

Sport and North Edition



17x6.5-inch
Cast aluminum
painted Sparkle Silver
Standard

North All Season Group



17-inch Cast aluminum
painted Tech Silver
Standard

Limited



18x7-inch
Cast aluminum
Standard



18x7-inch
Cast aluminum
chrome-clad
Optional

⁽¹⁾Not compatible with aftermarket fabric protecting coatings.

POWERTRAIN

Engine	2.0L DOHC 16V VVT I-4 ⁽¹⁾ /2.4L DOHC 16V VVT I-4
Displacement cc (cu. in.)	1998 (122)/2360 (144)
Power kW (hp) @ rpm	118 (158) @ 6400/128 (172) @ 6000
Torque N-m (lb.-ft.) @ rpm	191 (141) @ 5000/224 (165) @ 4400
Fuel System	Sequential multipoint, electronic fuel injection
Fuel Recommendation	Unleaded regular, 87 octane (R+M)/2

Engine Construction

High-pressure die-cast aluminum block with dry iron liners, cast aluminum cylinder head, forged crankshaft, also dual counter-rotating balance shafts on 2.4L

Electronic Throttle Control _____ Std.

Intake Design

Tuned intake manifold with Electronic Active Charge Motion Control valves, four valves per cylinder, electronically controlled, Variable Valve Timing on both camshafts

Exhaust System

Oversized displacement muffler for reduced back pressure and noise, long-life design

Transmission

- Five-speed manual with overdrive, ratio range (:1) 3.77 – 0.72 (1st – 5th); overall top gear ratio: 3.34 _____ Std.
- Continuously Variable automatic with Auto/Stick™ (CVT2); incorporates 30-mm high-strength multilayer steel drive belt, ratio range (:1), 2.35 – 0.39; overall top gear ratio: 2.41 _____ Opt.

Drive Systems

- Front-wheel drive (FWD) transaxle with constant velocity joints and equal-length half shafts _____ Std.
- Freedom-Drive I® active; full-time four-wheel drive (4x4) with Electronically Controlled Coupling (ECC) and selectable 4WD LOCK mode _____ Opt.

ELECTRICAL SYSTEM

Alternator	120A
Battery	525 CCA, maintenance-free

BODY/SUSPENSION/CHASSIS

Body Design

Unitized steel construction with a structural safety cage utilizing advanced hot-stamped, tailor-rolled, dual-phase steel technologies and advanced joint design for added strength, reduced weight and improved NVH

Suspension

Front: Independent with MacPherson struts, coil springs over gas-charged shocks and stabilizer bar
Rear: Independent multilink with coil springs, gas-charged shocks and link-type rear stabilizer

Steering (Performance-tuned on Limited) _____ Power-assisted, rack and pinion

Overall Ratio _____ 16.4:1

Turning Diameter (curb-to-curb) m (ft.), Compass Sport and North Edition/Compass Limited _____ 10.8 (35.5)/11.3 (37.2)

Turns (lock-to-lock) _____ 2.9

Brake System Four-wheel disc hydraulic, power-assisted, 290 mm (11.5") vented front/260 mm (10.3") solid rear _____ Std. Limited and 4x4 Sport/North Edition
Ventilated front disc, rear drum _____ Std. FWD Sport/North Edition

Electronic Stability Program (ESP™)⁽²⁾

Four-channel, four-wheel anti-lock with active wheel speed, vehicle speed, steering wheel angle, yaw rate, and lateral acceleration sensors, vehicle stability management with two-stage activation switch, all-speed traction control, Brake Assist, Electronic Roll Mitigation and Electronic Brake Distribution _____ Std.

Parking Brake Type _____ Drum-in-hat

⁽¹⁾2.0L available only on front-wheel drive Sport and North Edition. ⁽²⁾No system, no matter how sophisticated, can repeal the laws of physics or overcome careless driving actions. Performance is limited by available traction, which snow, ice and other conditions can affect. When the ESP warning lamp in the instrument cluster flashes, the driver needs to use less throttle and adapt speed and driving behaviour to prevailing road conditions. Always drive carefully, consistent with conditions. Please always wear your seat belt. ⁽³⁾Restrictions apply. See Owner's Manual for details. ⁽⁴⁾Not available with 2.0L engine. Trailer Tow Prep Group includes engine oil cooler and trailer tow harness; does not include hitch receiver or hitch.

CAPACITIES/WEIGHTS/TOWING

Fuel Tank – L (imp. gal.)	51 (11.2)
Base Curb Weight (with 2.4L engine)	
Five-speed manual (FWD/4x4) – kg (lb.)	1393 (3071)/1462 (3223)
CVT2 (FWD/4x4) – kg (lb.)	1557 (3153)/1499 (3305)
Payload Capacity (includes occupants and cargo) – kg (lb.)	420 (925)
Maximum Gross Vehicle Weight Rating – kg (lb.)	2075 (4575)
Maximum Loaded Trailer Weight – kg (lb.) – Without Trailer Tow Prep Group	450 (1000) ⁽³⁾
With Trailer Tow Prep Group	907 (2000) ⁽³⁾⁽⁴⁾

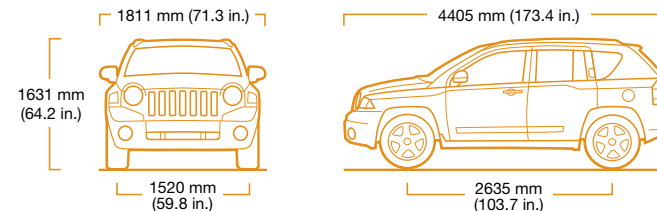
NOTE: For specific towing details, discuss your plans with your Jeep® retailer who will help you select the right equipment to meet your specifications.

INTERIOR DIMENSIONS – millimetres (inches) unless otherwise specified

Seating Capacity	5
Headroom front/front with sunroof/rear	1034 (40.7)/1000 (39.4)/1013 (39.9)
Legroom front/rear	1031 (40.6)/998 (39.3)
Shoulder Room front/rear	1387 (54.6)/1372 (54.0)
Hip Room front/rear	1328 (52.3)/1295 (51.0)
Cargo Volume rear seat up/folded/rear folded and front passenger seatback folded – L (cu. ft.)	643 (22.7)/1518 (53.6)/1750 (61.8)
Cargo Liftover Height	775 (30.5)

EXTERIOR DIMENSIONS – millimetres (inches) unless otherwise specified

Wheelbase	2635 (103.7)
Overall Length	4405 (173.4)
Overhang front/rear	877 (34.5)/893 (35.2)
Overall Width (excluding mirrors)	1811 (71.3)
Track front/rear	1520 (59.8)/1520 (59.8)
Overall Height (with roof rails)	1631 (64.2)
Running Ground Clearance (at curb weight)	206 (8.1)



NOTE: Compass Sport specifications shown above.

ABOUT THIS CATALOGUE: Since the time of printing, some of this information may have been updated. Ask your retailer for details before ordering.

Specifications, descriptions and illustrations contained in this catalogue are based on information believed to be correct at the time this publication was approved for printing. However, accuracy cannot be guaranteed. Chrysler reserves the right to discontinue models or options at any time or change specifications and materials, equipment or design without notice and without incurring obligation.

Some of the equipment may not be exactly as shown in this catalogue. Some of the equipment, described or illustrated in this catalogue may not be standard, and may be available only at extra cost, as factory installed or retailer installed; items described as "available" may be standard on some models and optional, or not available, on others. Equipment referred to as "available" or "optional" may be at extra cost. Some options are required in combination with other options. For the price of the model with the equipment you desire or verification of specifications and equipment availability described herein, see your Chrysler, Jeep®, Dodge retailer. Colour availability may vary by model. Due to printing limitations, the colours shown here and throughout the catalogue may vary slightly from the actual hue. See your retailer to view accurate colour chips.

Jeep is a registered trademark of Chrysler Group LLC, used under licence by Chrysler Canada Inc.
©2009 Chrysler Canada Inc. All rights reserved.



As satellite radio provider to Chrysler, Dodge and Jeep, SIRIUS Satellite Radio is factory installed and includes a one-year subscription with free online listening. Every drive will be full of discovery with 120 channels, including 69 commercial-free music channels and the best programming in sports, talk, comedy, and news. With coast-to-coast reception coverage, listen to what you want, when you want, in your SIRIUS equipped vehicle. For more information, visit sirius.ca.

	SPORT	NORTH EDITION	LIMITED
CAPABILITY			
Engine and Transmission – 2.4L DOHC 172-hp 16V dual VVT four-cylinder with five-speed manual	25D	25E	25F
– 2.4L DOHC 172-hp 16V dual VVT four-cylinder with Continuously Variable Transmission (CVT2) automatic with Auto/Stick™	26D	26E	26F
– 2.0L DOHC 158-hp 16V dual VVT four-cylinder with five-speed manual transmission. Available only with FWD	2BD	2BE	
– 2.0L DOHC 158-hp 16V dual VVT four-cylinder with Continuously Variable Transmission (CVT2) automatic with Auto/Stick. Available only with FWD	24D	24E	
Front-Wheel Drive (FWD, 4x2)	•	•	•
Four-Wheel Drive (4x4) – Freedom-Drive I® active full-time four-wheel drive with Electronically Controlled Coupling (ECC) and selectable 4WD lock feature	O	O	O
Brakes – Ventilated front disc, rear drum, with anti-lock (FWD only)	•	•	•
– Four-wheel anti-lock disc (included with 4x4)	P	P	•
Engine Block Heater	•	•	•
Hill Start Assist (Included only with manual transmission)	P	P	P
pSpeed Control (Included in North All Season Group)		O/P	•
TIP Start (Included only with automatic transmission)	P	P	P
EXTERIOR			
Accents – Body colour liftgate appliqué		•	•
– Body colour bodyside mouldings	•	•	•
– Bright bodyside mouldings (included in North All Season Group)		P	•
– Body colour door handles (black on Sport)		•	•
– Bright bumpers			•
Door Locks – Manual	•		
– Power with owner-programmable rolling auto-lock and Remote Keyless/Illuminated Entry		•	•
Fog Lamps – Two halogen, located in front bumper	•	•	•
Mirrors – Manual, foldaway	•		
– Power heated foldaway		•	•
Power Sunroof – With express open/close anti-pinch, sunshade and tilt features (included in Sun/Sound Group)		P	P
Tires – P215/60R17, BSW AS Touring	•	•	
– P215/55R18, BSW AS Performance			•
– P215/65R17, OWL AT (N/A 2.0L engine)		O	
– Spare, full-size (standard spare is compact type)	O	O	O
INTERIOR			
Air Conditioning With Air Filtering	O	•	•
– With automatic temperature control (late availability)			O
Assist Handles – Four, above doors	•	•	•
Cup Holders – Illuminated, front	•	•	•
Deep-tinted Glass – On rear door, cargo area and liftgate windows		•	•
HomeLink® Universal Transceiver⁽¹⁾ – Included in Security and Cargo Convenience Group		P	•
Leather-wrapped Steering Wheel With Audio Controls – Included in sun/sound group, North All-Season Group and Premium Sound group on North Edition; requires speed control		P	•
Seat Coverings – Cloth	•		
– Stain Repel ⁽²⁾ stain and odour resistant, anti-static seat fabric		•	
– Leather-faced			•
Seats – Front reclining with Active Head Restraints, rear 60/40-split folding. North Edition and Limited also have fold-flat front passenger seat and reclining rear seatbacks	•	•	•
– Six-way power driver's seat with manual lumbar adjustment			•
– Driver's seat height adjuster		•	
– Heated front seats (included in North All Season Group and in Security and Cargo Convenience Group)		P	•

	SPORT	NORTH EDITION	LIMITED
Windows – Manual	•		
– Power with driver's one-touch down		•	•
SAFETY AND SECURITY			
Air Bags³ – Advanced multistage front air bags	•	•	•
– Side-curtain, deploy during a severe force side impact	•	•	•
– Front seat-mounted side (included in Security and Cargo Convenience Group)	O	P	P
Sentry Key⁴ Anti-theft Engine Immobilizer – Theft-deterrent system	•	•	•
Tire Pressure Monitoring Display – Instrument panel display indicates which tire is too low or high (included in Security and Cargo Convenience Group)		P	•
Tire Pressure Monitoring Warning Lamp	•	•	
SOUND SYSTEMS/ENTERTAINMENT			
Radios – Media Centre 130 CD/MP3 radio with audio jack and four speakers	•	•	•
– Media Centre 230 6-CD/DVD/MP3 radio with six-disc changer and audio jack	O	O	O
– Media Centre 430 CD/DVD/MP3 radio with 6.5-inch touch screen, 30GB hard drive (6,700 song capacity) and audio jack		O	O
– Media Centre 730N Uconnect Navigation, CD/DVD/MP3 with 6.5-inch touch screen, GPS navigation, 30GB hard drive (4,250 song capacity), uconnect phone with voice command and audio jack			O
SIRIUS⁵ Satellite Radio – Factory-installed, includes one year subscription from SIRIUS (included in SIRIUS Satellite Radio Group and Sun/Sound Group)		O/P	•
Uconnect Phone⁽⁴⁾ – Hands-free calling with voice command (included in SIRIUS Satellite Radio Group on North Edition; included with Security and Cargo Convenience Group, and with Media Centre 730N navigation radio, on Limited. Includes Universal Customer Interface ⁽⁵⁾)		P	O/P
SIRIUS Satellite Radio Group – Includes SIRIUS Satellite Radio, Uconnect Phone ⁽⁴⁾ with Voice Command and Universal Consumer Interface ⁽⁵⁾		O	
Premium Sound Group – Includes six Boston Acoustics [®] speakers, subwoofer, two flip-down liftgate speakers, 368 watts total; also leather-wrapped steering wheel with audio controls on North Edition ⁽⁶⁾		O	O
Sun/Sound Group – Includes power sunroof and Premium Sound Group; also includes leather-wrapped steering wheel with audio controls and SIRIUS Satellite Radio ⁽⁶⁾ on North Edition		O	O
PACKAGES (SEE ALSO "SOUND SYSTEMS/ENTERTAINMENT")			
North All Season Group – Available only on 4x4. Includes heated front seats, speed control, leather-wrapped steering wheel with audio controls, bright bodyside mouldings and Remote Start ⁽⁷⁾		O	
Security and Cargo Convenience Group – Includes soft tonneau cover, heated front seats, ⁽⁶⁾ front seat-mounted side air bags, security alarm, HomeLink, ⁽¹⁾⁽⁶⁾ remote start system, ⁽⁷⁾ Vehicle Information Centre, ⁽⁶⁾ Tire Pressure Monitoring Display ⁽⁶⁾ (also includes Uconnect Phone ⁽⁴⁾ and Universal Consumer Interface on Limited)		O	O
Smoker's Group – Includes removable ashtray and cigar lighter	O	O	O
Trailer Tow Prep Group – Includes engine oil cooler, trailer tow wiring harness (n/a 2.0L engine)		O	O

• – Standard P – Available within package noted O – Optional N/A – Not available AS – All-Season AT – All-Terrain BSW – Black Sidewall OWL – Outlined White Letter

⁽¹⁾Not compatible with all garage door openers. See your retailer for details. ⁽²⁾Not compatible with aftermarket fabric protecting coatings. ⁽³⁾Always use seat belts. Children 12 and under should always be in a back seat correctly using an infant or child restraint system, or the seat belt properly positioned, dependent on the child's age and weight. ⁽⁴⁾Must use Bluetooth™ compatible mobile phone. ⁽⁵⁾Universal Customer Interface (UCI) allows operation of personal iPod® through the vehicle radio. ⁽⁶⁾Standard on Limited. ⁽⁷⁾Remote Start only with CVT2 automatic.

Mopar, Freedom-Drive I and Sentry Key are registered trademarks of Chrysler Group LLC. ESP and Uconnect are trademarks of Chrysler Group LLC. Auto/Stick is a trademark of Hurst Performance, Inc. SIRIUS and the dog logo are registered trademarks of SIRIUS Satellite Radio Inc. Boston Acoustics is a registered trademark of Boston Acoustics, Inc. HomeLink is a registered trademark of Johnson Controls Technology Company. Cummins is a registered trademark of Cummins, Inc. Chrysler and Dodge are registered trademarks of Chrysler Canada Inc., a wholly owned subsidiary of Chrysler Group LLC. Bluetooth and the Bluetooth logos are trademarks owned by Bluetooth SIG, Inc., U.S.A., and are used by Chrysler under licence. iPod is a registered trademark and the iPod design is a trademark of Apple Computers, Inc.

Jeep Goods

For those who choose to navigate the city streets or the less travelled paths of the backwoods, Jeep Goods will provide you with rugged high-quality merchandise fit for the Jeep way of life!

Jeepgoods.ca



2010 Chrysler, Jeep[®], and Dodge vehicles are backed by a 5-year or 100,000-kilometre* fully transferable Powertrain Warranty with \$0 deductible plus 24-hour roadside assistance.† Basic Warranty coverage is for 3 years or 60,000 kilometres.*

Rust-through coverage on all body sheet metal is for 3 years. The Cummins[®] Turbo Diesel engine is protected by a separate Limited Warranty, covering the engine for 5 years or 160,000 kilometres.* Hybrid components (if equipped) are covered for 8 years or 160,000 kilometres.*

*Whichever comes first. †Some conditions may apply. The 5/100 Warranty does not apply to vehicles sold for certain commercial uses or to SRT including Viper models. See your retailer for details.



Enhance your Jeep Compass with Authentic Jeep Accessories by Mopar. They're designed specifically for your vehicle, for exceptional fit, finish and performance. Visit your dealership or mopar.ca.

Jeep[®]

Learn more @ jeep.ca or call 1-800-361-3700

