

INTRODUCING > THE ALL-NEW 2011 KIA SORENTO

SORENTO



THE ALL-NEW 2011 KIA SORENTO
A NEW WAY TO SEE THE WORLD

It's your world. See it in a new way – your way –
in the all-new 2011 Kia Sorento.

For 2011, Sorento reaches new heights for style, comfort
and driving dynamics while continuing to deliver the
go-anywhere capability it's always been known for.

The all-new Sorento is also a vehicle of pleasant surprises –
like standard heated front seats and an available panoramic
sunroof – and it's the first Kia ever built in North America.

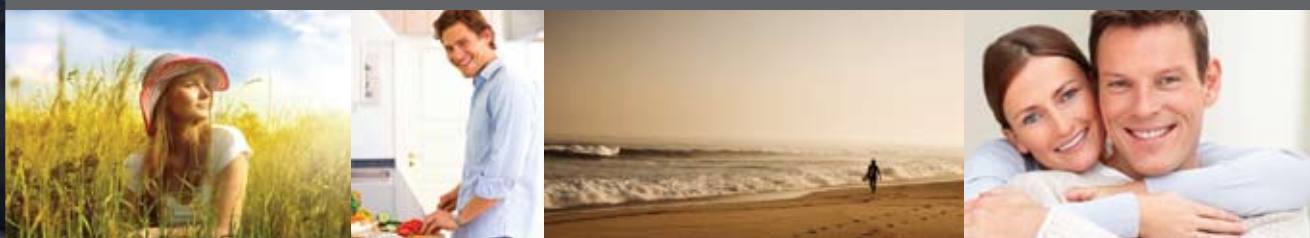
The beautifully rugged 2011 Sorento. A new way
to see the world. A new way for the world to see you.





CROSSOVER REFINEMENT, SUV CAPABILITY

READY FOR YOUR WORLD



The refinement of a European-inspired crossover and the back-roads-ready performance of an SUV come together as one in the all-new 2011 Sorento.

Sorento's new unibody architecture and four-wheel independent suspension perform with smooth, quiet assurance. Potholes and rough pavement can't upset it; darting traffic and sudden stops won't rattle its composure or yours.

When the roads end or the weather turns wild, Sorento helps you advance with confidence, thanks to the availability of full-time all-wheel drive (AWD) with an electronic locking differential.

Sorento also offers a choice of powertrains – including four-cylinder and V6 engines, and new six-speed manual and Steptronic gated automatic transmissions – for a perfect blend of performance and fuel efficiency.

It's your world, and Sorento's ready for it.



> Sorento EX-V6 Luxury shown in Blue Jeans.
Vehicle may not be exactly as shown.





1
REAR SPOILER



2
BOLD SIDE-ACCENT LINES



1
A standard rear spoiler on EX-V6 Luxury models adds a sporty design cue to Sorento's large, easy-to-open tailgate.

2
Bold side-accent lines, elegant 17- and 18-inch alloy wheels and standard heated power side mirrors with integrated turn signals give Sorento a luxurious presence.

3
Sorento's SUV-like capabilities are pronounced in its deep and wide Kia-signature grille, black lower mouldings and standard fog lamps with mesh surrounds.

3
SUV-LIKE CAPABILITIES



> Sorento EX-V6 Luxury shown in Bright Silver. Vehicle may not be exactly as shown.

DESIGNED WITH PURPOSE

VERSATILITY WITH A STYLISH FLARE

The 2011 Sorento is a broad-shouldered expression of Kia's new "design language", blending emotion and sophistication with the comfort features and practicality of a family-friendly crossover SUV.

Longer, wider and lower than before, the new Sorento offers more available cargo room and optional seven-passenger seating, reflecting its purposeful character.

Understated yet compelling, Sorento is proof that versatility can have an excitement and style all its own.



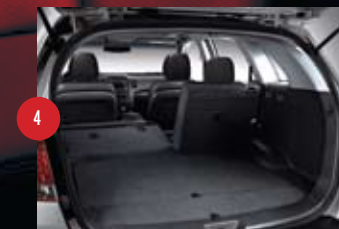
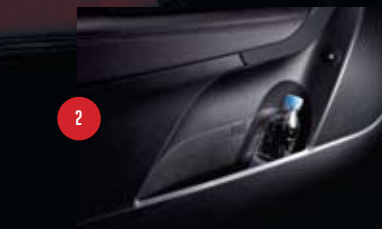
COMFORT MEETS FLEXIBILITY
IT'S READY FOR YOU

The all-new Sorento shapes itself to your needs in so many ways.
 For those times when you crave comfort, Sorento obliges with standard heated front seats, available leather seating with an eight-way power driver's seat, and an available, glare-reducing electrochromic rearview mirror.

The comfort extends to everyone aboard. There's more interior space than ever before and a new, optional third-row seat on Sorento LX-V6 and EX-V6 Luxury models.

For easy cargo hauling, the second- and third-row seats fold flat to give you plenty of room for big loads.

Always ready – that's the 2011 Sorento.



1 > Convenient Cupholders
 A fold-down centre armrest and twin cupholders provide added comfort and convenience for second-row passengers.

2 > Handy Door Pockets
 Moulded pockets in each side door help keep maps, documents and bottled drinks within easy reach and clutter at bay.

3 > Under-Floor Storage
 All five-passenger Sorento models come with a standard rear under-floor storage compartment – handy for stowing travel items and valuables out of sight.

4 > Plenty of Cargo Space
 Folding rear seatbacks provide a flat load floor for easy loading and open up as much as 2,052 litres (72.5 cu. ft.) of cargo space.

5 > Keyless Entry
 Sorento features a standard keyless entry system with a security-enhancing panic button.

6 > Panoramic Sunroof
 Drive with a cabin full of light with Sorento's available panoramic sunroof, featuring a power tilt and sliding front panel and fixed rear glass.

> Vehicle may not be exactly as shown.

CONVENIENCE AND CONTROL

A DYNAMIC DRIVING EXPERIENCE



The emotion and sophistication of Sorento's new design carry over into the driving experience: it's a seamless and dynamic integration of convenience and control.

The sporty gauge cluster comes with Kia's ECO-Minder™ indicator¹ to help you get the most out of every litre of gasoline by letting you know when you're driving at your fuel-efficient best. Intuitive controls enhance the whole driving experience and include standard steering wheel-mounted audio and cruise controls, and Bluetooth® hands-free cell phone capability² that helps you keep your attention focused on the road.

With Sorento, you're in charge. Enjoy the experience.



> **Push-Button Start** The luxury of a keyless, push-button ignition switch is standard on Sorento LX-V6 and EX models.



> **Steptronic Shifting** Sorento's new six-speed Steptronic automatic transmission includes a clutchless, manual-shift mode for a more spirited driving experience.



> **Set-and-Forget Comfort** All Sorento EX models feature standard dual-zone automatic temperature control and an ionized air filtration system for superior comfort.



> **Built-In Navigation** The Sorento EX-V6 Luxury includes a standard in-dash navigation⁴ system that gives you turn-by-turn directions to virtually any destination in North America. Just let the system be your guide.



> **Your Music Your Way** Sorento features standard AUX and USB audio ports, and an iPod®-compatible audio cable for your listening enjoyment.



> **Dazzling Sound** Sorento's AM/FM/CD/MP3/Satellite audio system is available in six- and ten-speaker configurations for exceptional sound quality. In addition, all models come with a three-month trial subscription to SIRIUS® satellite radio³.

¹ Automatic transmission only. ² Bluetooth® technology-enabled cell phone required. ³ Service available in the 10 provinces and 3 territories of Canada, and the 48 contiguous states of the U.S. Monthly subscription sold separately after 3 trial months. ⁴ Bluetooth® and navigation technology only recognizes English voice prompts, with the navigation system. Vehicle may not be exactly as shown.

CONFIDENCE AND PROTECTION

SAFER BY DESIGN

The 2011 Sorento is designed and engineered for safety – exceptional safety.

With a body structure featuring more high-tensile steel than ever before; front and side-impact airbags; side curtain airbags with rollover protection; and active anti-whiplash front headrests, the all-new Sorento is built to protect you and your loved ones.

Perhaps more importantly, Sorento is also equipped with advanced features to help you maintain control and avoid trouble in potentially dangerous situations.

What could be safer or more confidence-inspiring than that?



1 Rearview Display

Sorento's available rearview camera includes a mirror-integrated display to help you see what's behind the vehicle when you're backing up. On the EX-V6 Luxury models, view the camera display on the standard in-dash navigation system.



2

Parking Assist Bumper-mounted sensors in Sorento's available rear parking sonar system trigger an in-cabin warning to alert you to potential obstacles behind the vehicle.



3

Braking and Stability Control Sorento's standard four-wheel-disc anti-lock braking system (ABS) is augmented with electronic brake-force distribution (EBD) for optimal braking performance. ABS is also integrated with Sorento's traction control system and standard, stability-enhancing electronic stability control and Rollover Prevention systems to provide you with even greater driving confidence and safety.



4

Added Safety on Hills To help prevent rollback on uphill grades, the 2011 Sorento comes with standard Hill Assist Control (HAC) – a great peace-of-mind feature, especially when you have a trailer in tow. Sorento also features a standard driver-activated Downhill Brake Control (DBC) function that helps you better control your descent on steep roads and terrain.



> FEATURES

Exterior	LX MT/AT	EX	LX-V6	EX-V6	EX-V6 Luxury
17" alloy wheels	S	-	S	-	-
18" alloy wheels	-	S	-	S	S
18" alloy wheels with chrome finish	-	-	-	-	0
Tires P235/65R17	S	-	S	-	-
Tires P235/60R18	-	S	-	S	S
Power tilt and sliding panoramic sunroof	-	-	-	0	S
Projection-type headlights	S	S	S	S	S
Fog lights	S	S	S	S	S
Dual power, heated, body colour side mirrors	S	S	S	S	S
Side mirror integrated turn signals	S	S	S	S	S
Deep-tint privacy glass	S	S	S	S	S
Solar control front windshield	S	S	S	S	S
Black side sill moulding and wheel arch moulding	S	S	S	S	S
Black mesh front grille with chrome coated garnish	S	S	S	S	S
Chrome coated rear garnish	S	S	S	S	S
Chrome coated door handles	S	S	S	S	S
Front and rear mud guards	S	S	S	S	S
Rear spoiler	-	-	-	-	S
Roof rails	- / S	S	S	S	S

Seating & Trim	LX MT/AT	EX	LX-V6	EX-V6	EX-V6 Luxury
7-passenger seating	-	-	0	-	0
Cloth seats	S	-	S	-	-
Leather seats	-	S	-	S	S
Heated front seats	S	S	S	S	S
2 nd row 60/40 split folding seating	S	S	S	S	S
3 rd row 50/50 split folding seating	-	-	0	-	0
6-way manual adjustable driver's seat	S	-	S	-	-
8-way power adjustable driver's seat with lumbar support	-	S	-	S	S
Front row seat back pockets	S	S	S	S	S
2 nd row fold-down armrest	S	S	S	S	S
Mood lighting	-	-	-	-	S
Deluxe door scuff	-	S	-	S	S
Chrome coated inside door handles	S	S	S	S	S
Black woodgrain interior accents	S	S	S	S	S

S = Standard 0 = Optional - = Not Available
MT = Manual transmission AT = Automatic transmission

¹ Available in the 10 provinces and 3 territories of Canada and 48 contiguous United States. Monthly subscription sold separately after three trial months.

² Bluetooth[®] technology enabled cellphone required.

³ Bluetooth[®] and navigation technology only recognizes English voice prompts, with the navigation system.

⁴ 5-seater only.



The 2011 Sorento is equipped with standard Bluetooth[®] technology to provide hands-free calling capability with Bluetooth-enabled cell phones.



Delivering 120 channels of some of the best programming available, SIRIUS is The Best Radio on Radio. Home of 100% commercial free music, news, talk, entertainment, traffic, weather and data, SIRIUS also broadcasts live play-by-play as the Official Satellite Radio Partner of the NFL, NASCAR, NBA and NHL. To find out more about SIRIUS Satellite Radio, speak to your Kia dealer or visit www.sirius.ca

Comfort & Convenience	LX MT/AT	EX	LX-V6	EX-V6	EX-V6 Luxury
Air conditioning with cabin air filter	S	S	S	S	S
Dual-zone fully automatic temperature control with ionized air filtration system	-	S	-	S	S
3 rd row heating and cooling	-	-	0	-	0
Power door locks with two turn entry system	S	S	S	S	S
Remote keyless entry with panic function	S	S	S	S	S
Smart Key push button start	-	S	S	S	S
Steering wheel mounted cruise control	S	S	S	S	S
ECO-Minder™ indicator	- / S	S	S	S	S
Power windows with one touch driver's express down and retained time lag feature	S / -	-	-	-	-
Power windows with one touch driver's express up/down and retained time lag feature	- / S	S	S	S	S
6-speaker AM/FM/CD/MP3 stereo system	S	S	S	S	-
Premium 10-speaker stereo system (including front centre speaker, sub-woofer and external amp)	-	-	-	-	S
SIRIUS [®] satellite radio (includes three trial months) ¹	S	S	S	S	S
AUX & USB input ports with iPod [®] cable	S	S	S	S	S
Steering wheel mounted audio controls	S	S	S	S	S
Bluetooth [®] hands-free cell phone capability ²	S	S	S	S	S
In-dash navigation system ³	-	-	-	-	S
Leather-wrapped steering wheel and gear shift knob	-	S	-	S	S
Tilt and telescopic adjustable steering column	S	S	S	S	S
Trip computer	S	S	S	S	S
Dual sliding sunvisor with vanity mirrors	S	S	S	S	S
Illuminated vanity mirrors with cover	- / S	S	S	S	S
Day & night rearview mirror	S	-	-	-	-
Electrochromic rearview mirror	-	S	S	S	S
Engine cover	S	S	S	S	S
Lockable glove box	S	S	S	S	S
Centre console storage compartment with armrest	S	S	S	S	S
Front map lamp with sunglasses holder	S	S	S	S	S
2 nd row and cargo area lamps	S	S	S	S	S
Rear cargo under-floor storage compartment ⁴	S	S	S	S	S
Rear cargo cover and luggage net	-	S	-	S	S

Safety	LX MT/AT	EX	LX-V6	EX-V6	EX-V6 Luxury
Dual advanced front airbags	S	S	S	S	S
Dual curtain side-impact airbags with roll-over sensor	S	S	S	S	S
Dual front seat-mounted side-impact airbags	S	S	S	S	S
Anti-whiplash active front headrests	S	S	S	S	S
Height adjustable front and 2 nd row headrests	S	S	S	S	S
Electronic stability control (ESC)	S	S	S	S	S
Traction control system (TCS)	S	S	S	S	S
Hill assist control (HAC)	S	S	S	S	S
Downhill brake control (DBC)	S	S	S	S	S
Roll-over prevention (ROP)	S	S	S	S	S
4-wheel anti-lock braking system (ABS)	S	S	S	S	S
4-wheel disc brakes	S	S	S	S	S
Height adjustable front seatbelts with pretensioners and load limiters	S	S	S	S	S
Auto light control	S	S	S	S	S
Impact sensing auto door unlock	S	S	S	S	S
Washer fluid low warning indicator	S	S	S	S	S
Child safety rear door locks	S	S	S	S	S
Lower anchors and tethers for children (LATCH)	S	S	S	S	S
Variable intermittent front windshield wipers	S	S	S	S	S
Front windshield wiper de-icer	S	S	S	S	S
Rear window wiper	S	S	S	S	S
Rear window defroster	S	S	S	S	S
Rearview camera	-	S	-	S	S
Rear parking sonar	- / S	-	S	-	-

> WHEELS



17" alloy wheel



18" alloy wheel



18" alloy wheel with chrome finish

> SPECIFICATIONS

Engine	LX & EX	LX-V6, EX-V6 & EX-V6 Luxury
Type	2.4L, I4, aluminum block and head	3.5L, V6, aluminum block and head
Valve train	DOHC, 4 valves per cylinder, Dual Continuously Variable Valve Timing (CVVT)	DOHC, 4 valves per cylinder, Dual Continuously Variable Valve Timing (CVVT)
Horsepower	175 hp @ 6,000 rpm	276 hp @ 6,300 rpm
Torque	169 lb.-ft. @ 3,750 rpm	248 lb.-ft. @ 5,000 rpm
Compression ratio	10.5:1	10.6:1
Intake	Variable Intake System (VIS), Electronic Throttle Control (ETC)	Variable Intake System (VIS), Electronic Throttle Control (ETC)
Drive type	Front wheel drive (FWD); available all-wheel drive (AWD)	Front wheel drive (FWD); available all-wheel drive (AWD)
Transmission	6-speed manual	6-speed Steptronic gated automatic
	Available 6-speed Steptronic gated automatic	

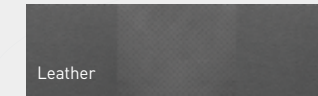
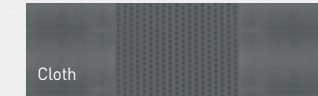
Dimensions, mm (in.)	
Wheelbase	2,700 (106.3)
Track (front/rear)	1,618 / 1,621 (63.7 / 63.8)
Length	4,670 (183.9)
Width	1,885 (74.2)
Height	1,710 (67.3)
Height (with roof rails)	1,745 (68.7)
Height (with roof rails and sunroof)	1,755 (69.1)
Ground clearance	190 (7.5)
Approach/departure angle	28°/23°
Head room - 1 st /2 nd /3 rd (if applicable)	996 / 995 / 906 (39.2 / 39.2 / 36.7)
Shoulder room - 1 st /2 nd /3 rd (if applicable)	1,506 / 1,491 / 1,366 (59.3 / 58.7 / 53.8)
Leg room - 1 st /2 nd /3 rd (if applicable)	1,048 / 955 / 795 (41.3 / 37.6 / 31.3)
Hip room - 1 st /2 nd /3 rd (if applicable)	1,431 / 1,421 / 1,128 (56.3 / 55.9 / 44.4)

> EXTERIOR COLOURS



(M) = Metallic. (P) = Pearl. The exterior and interior colours in this brochure are as close to the actual vehicle production colours as the printing process allows. Vehicle may not be exactly as shown.

> INTERIOR COLOURS



Grey



Beige



Black



Black & Ivory



Black & Ivory

A NEW WAY TO SEE THE WORLD



SOUL



FORTE



FORTE KOUP



SORENTO



RONDO



MAGENTIS



RIO



RIO5



SEDONA



SPORTAGE



BORREGO

5Year
Warranty

> WE'VE GOT YOU COVERED.

- > 5-year/100,000 km Worry-free comprehensive warranty covering virtually the entire vehicle*
 - > 5-year/100,000 km Powertrain warranty covering the engine, transmission, axles, differentials and driveshafts*
 - > 5-year/100,000 km Roadside assistance covers you in case of mechanical breakdown anywhere in North America*
 - > 5-year/unlimited km Anti-perforation warranty on body sheet metal defects in material/workmanship*
- > For more information visit kia.ca or call 1-877-542-2886

* Some restrictions apply. For more information on our 5-5-5 Total Care Ownership Coverage, call us at 1-877-542-2886. All information contained herein was accurate and correct at the time of printing. Kia Canada Inc. reserves the right to make changes at any time without notice, and without any obligations as to colours, materials, specifications, features, accessories, packages, models and any applicable programs. Some vehicles shown may include optional equipment or may not be exactly as shown. Kia Canada Inc., by the publication and dissemination of this material, does not create any warranties, either expressed or implied, to any Kia products. See your Kia dealer or website for further details. SIRIUS logo and related marks are trademarks of SIRIUS Satellite Radio Inc. The Bluetooth word mark and logo are registered trademarks and are owned by Bluetooth SIG, Inc. Reproduction of the contents of this material without the expressed written approval of Kia Canada Inc. is prohibited. © Copyright 2010 Kia Canada Inc. Printed in Canada, February 2010.

Part # 99999 033EE11

Kia Motors operates under a corporate value philosophy that begins with Responsibility. Through responsible actions, Kia creates "value with meaning" for our customers, shareholders, employees, partner companies, society and the Earth.

Moving the World Together is a corporate social responsibility initiative comprised of four mobility-themed programs:

1. **Environmental Movement**, supplying vehicles that encourage environmental sustainability;
2. **Safety Movement**, providing vehicles and programs that ensure safer mobility;
3. **Youth Movement**, enabling disadvantaged youth to lead more fulfilling and enriched lives;
4. **Community Movement**, supplying vehicles and services that enable community service and volunteering opportunities Kia employees.

Kia Canada Inc., its employees and its dealers embrace Moving the World Together by supporting the following organizations and initiatives that help make a difference to Canadian communities.

- Habitat for Humanity
- Mothers Against Drunk Driving (MADD)
- Toronto FC Youth Clinics
- Automotive Recyclers of Canada

NORTH AMERICAN COMMITMENT

Kia Motors continues to expand its investment in research, design and production facilities geared to fulfilling the needs and expectations of North American drivers.

Successful and innovative new vehicles – including the Forte Koup and the Soul'ster concept – are the hallmark of Kia's North American Design Centre in Irvine, California, which opened in early 2007.

In November of 2009, Kia began production at its first-ever North American manufacturing plant in West Point, Georgia. This US\$1 billion state-of-the-art facility proudly builds the all-new 2011 Kia Sorento for the Canadian, U.S. and Puerto Rican markets.

> WWW.KIA.CA

KIA KIA MOTORS
The Power to Surprise™

2011